

CERTIFICATE OF LOCATION OF GOVERNMENT CORNER

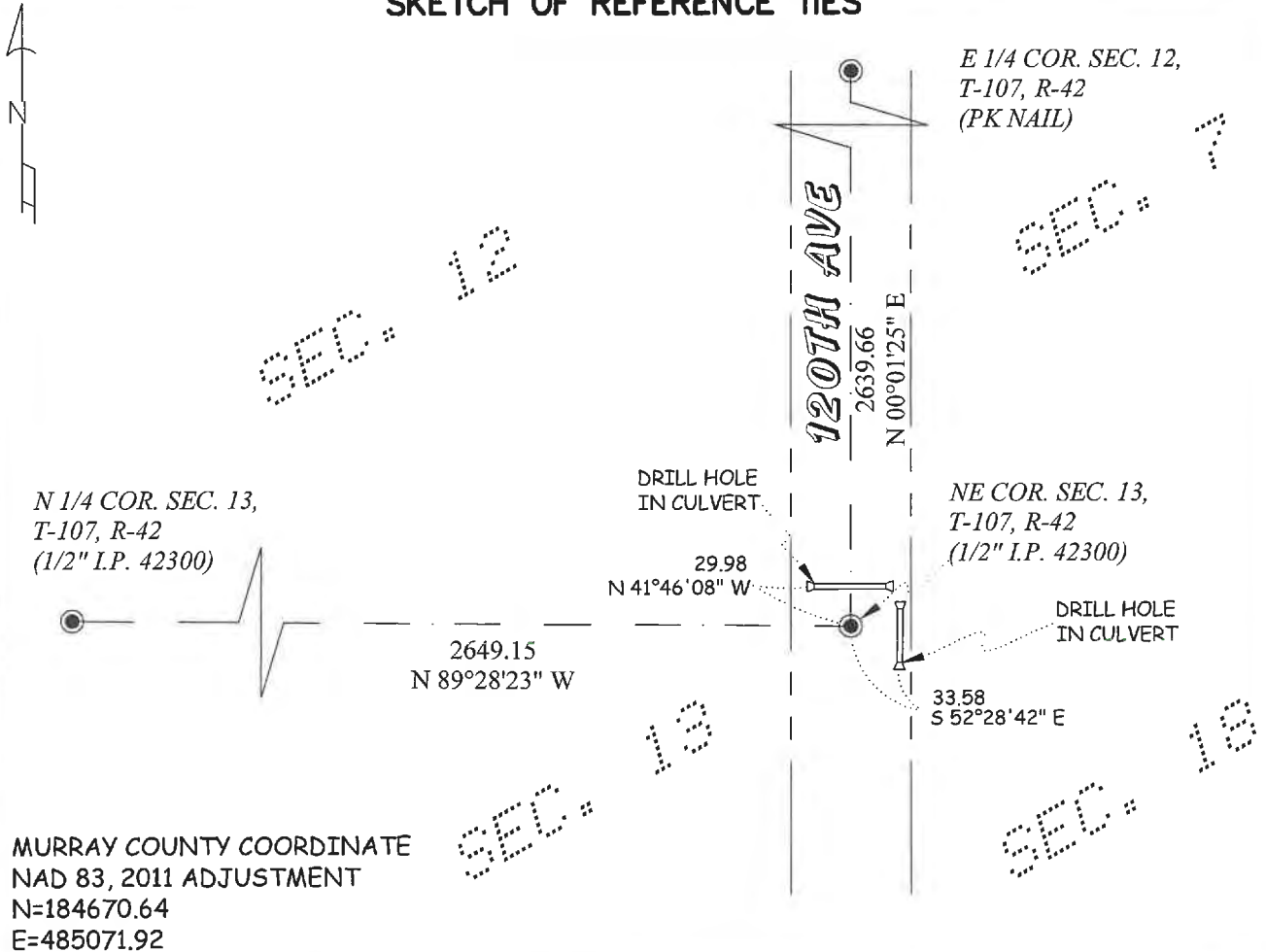
NORTHEAST Corner of Section 13, Township 107, Range 42, 5TH P.M.

STATE OF MINNESOTA, County of MURRAY

At the corner location shown on the sketch:

- On _____ found a _____
Date _____
- left monument as found, lowered monument, removed monument (explain)
- On 7-21-2021 placed a 1/2" Iron Pipe, with Cap #42300
Date _____

SKETCH OF REFERENCE TIES



MURRAY COUNTY COORDINATE
 NAD 83, 2011 ADJUSTMENT
 N=184670.64
 E=485071.92

Statement of evidence relative to this corner location is on back of page.

I hereby certify that this document and the data contained herein was prepared by me or under my direct supervision.

[Signature] 08-12-2021
 Signature Date

Registration No. 42300

- Land Surveyor Professional Engineer
- County Surveyor County Engineer

OFFICE OF THE COUNTY RECORDER

County of MURRAY

I hereby certify that this document was filed in the County Recorders office at _____ o'clock ____ M. on the _____ day of AUG 15 2021, 20__

County Recorder Karen Brown

Documnet Number _____

Statement of Evidence:

Northeast Corner of Section 12, Township 107, Range 42, Murray County, Minnesota.

The Original Government Survey of the Township Boundary was performed by J.W. Myers.

June 7, 1955- Minnesota Department of Natural Resources performed a survey in Section 12. The survey does not have any ties to the corner but has a dashed line drawn at the section line.

July 21, 2021 - O'Malley & Kron Land Surveyors, Inc. performed a survey in Section 12. The approximate area of the corner was searched and nothing was found. The position of the corner was determined to be on a line projected from the Northeast corner of Section 14 through the occupation line near North Quarter corner of Section 13 to its intersection with the center line of 120th Ave. This position fit the Original Government Survey distance of 40 chains (2640 feet) very well and the location of the signs placed by MN DNR along their boundary line. A new monument was placed and new ties made.